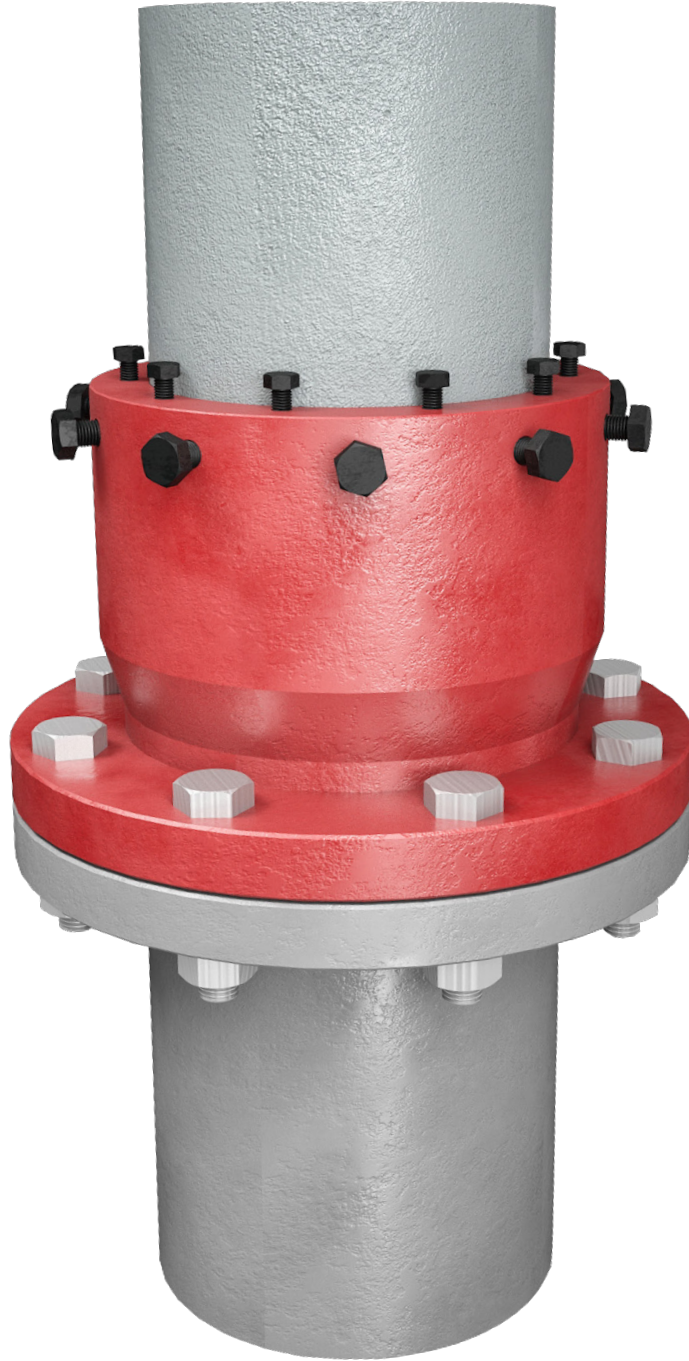




NOTRON PIPELINE

FLANGE Coupling



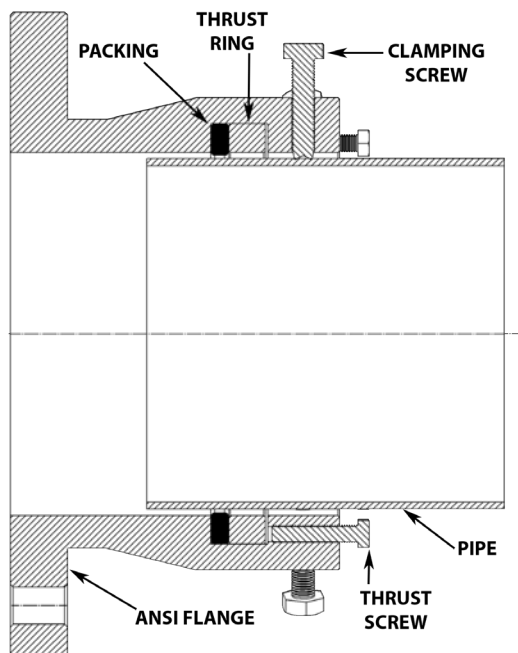
Established in 2008, our company started to design and produce equipment for oil and natural gas pipelines in the energy sector. It is the only company in Turkey that can respond to "PIG" production and design. With this capability, we compete with international companies in the Blue Stream and Baku-Ceyhan pipeline projects.

With our engineer staff, we able to produce innovative solutions. Alternative to our PIG design and manufacturing for oil – gas pipelines, we also manufacture pipeline coupling elements connection equipment with high quality standards.

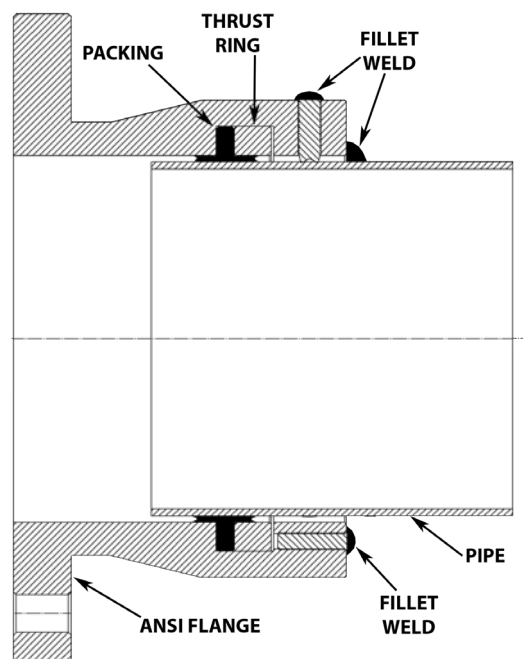
Additionally, we produce high quality Electronic Utility Markers, which are used globally for marking critical infrastructure locations such as telecommunication, fiber-optic, power transmission lines/cables, water or sanitary pipes, natural gas pipes underground. As Notron Pipeline, we continue to produce higher quality products in line with the demands of the energy sector, telecommunication infrastructure sector



BEFORE WELDING



AFTER WELDING



Unless the customer specifies otherwise, the NOTRON Flange Coupling is a mechanical fitting that doesn't need to be welded. In weld-hazardous locations, they are especially helpful for creating tie-in connections for prefabricated expansion and rework projects. For many applications, including difficult-to-reach areas like overhead pipelines, conduits, tunnels, tight manifolds, or dangerous sites, NOTRON Flanges are simple and secure to install. Applications involving thin walls require specific installation guidelines. For more information, get in touch with NOTRON. Standard sizes for NOTRON Flanges range from 1.5" to 48"; ASME classes 150 through 600 are offered. On request, special sizes and pressures can be obtained.

NOTRON MAXIMUM WORKING PRESSURE -20° F TO 100° F

API PIPE SIZE	PIPE ANCHORED				PIPE NOT ANCHORED			
	ANSI 150	ANSI 300	ANSI 400	ANSI 600	ANSI 150	ANSI 300	ANSI 400	ANSI 600
1.5"	285	740	990	1480	285	740	990	1480
2"	285	740	990	1480	285	740	990	1480
3"	285	740	990	1480	285	740	990	1247
4"	285	740	990	1480	285	740	990	1131
6"	285	740	990	1480	285	696	696	696
8"	285	740	990	1480	285	513	513	513
10"	285	740	990	1480	285	396	396	396
12"	285	740	990	1480	285	328	328	375
14"	285	740	990	1480	285	311	311	350
16"	285	740	990	1480	238	238	238	268
18"	285	740	990	1480	251	251	251	282
20"	285	740	990	1480	203	203	203	229
24"	285	740	990	1480	212	212	212	247

Standard body materials:

- A350 / ST52 / A216
- ASTM A106 Gr. C
- ASTM A105
- ASTM A350 Gr. LF2

Options:

- Marine epoxy paint for corrosion protection
- NACE MR0175 / ISO 15156 compliant materials

