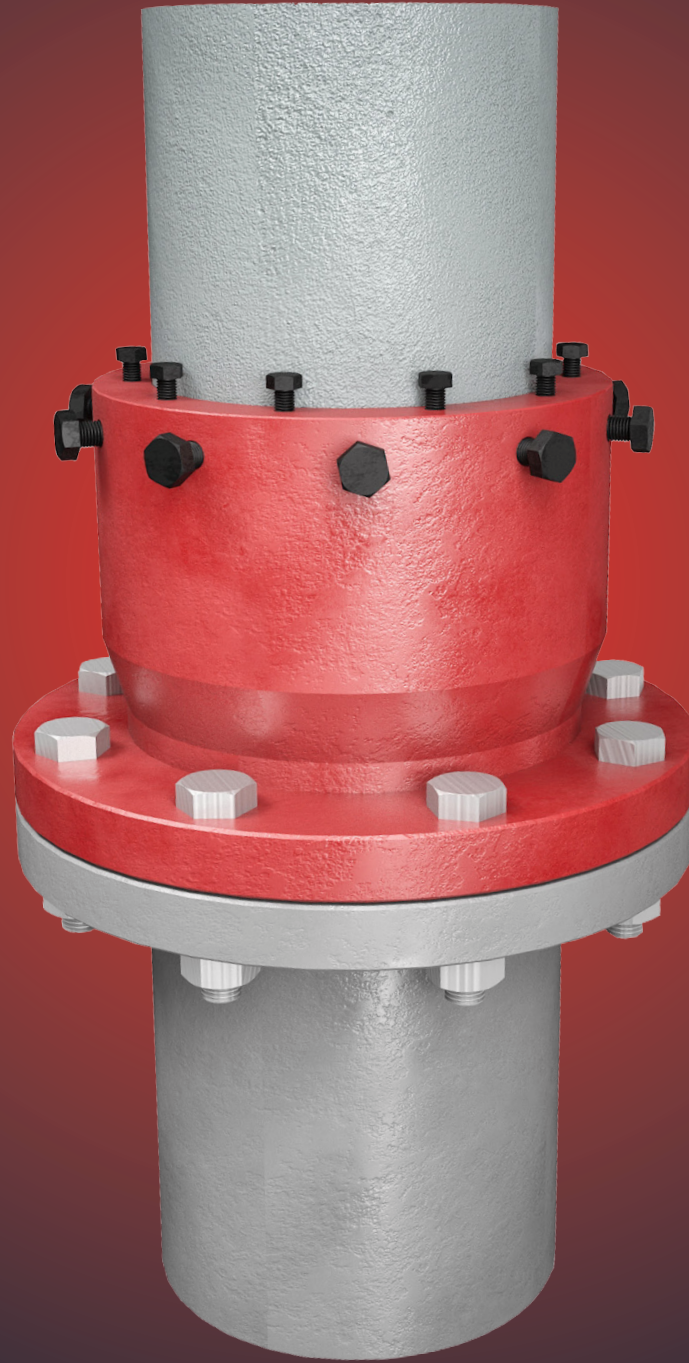


NOTRON
PIPELINE

FLANGE DATASHEET



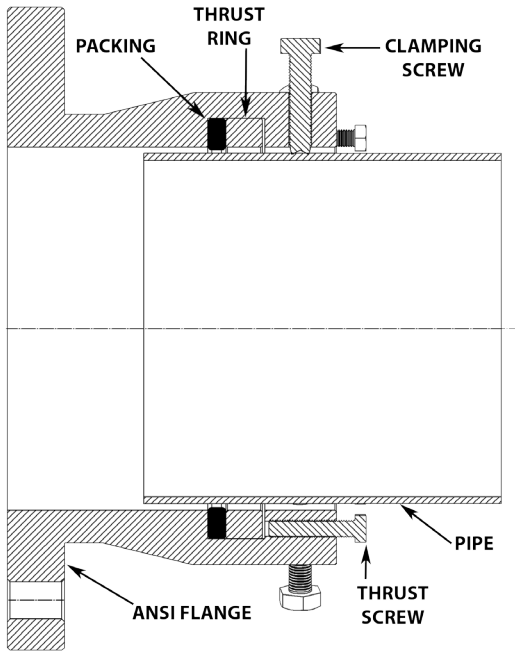
Our company, which was established in 2008, started to design and produce equipment for oil and natural gas pipelines in the energy transmission sector. It is the only company in Turkey that can respond to "Pig" production and design. Thanks to this capability, we compete with international companies in Blue Stream and Baku-Ceyhan pipeline project tenders.

Thanks to our engineer staff in our company, we produce innovative solutions. At this point, we design and manufacture not only pigs for oil – gas pipelines, but also connection equipment with high quality and quality standards.

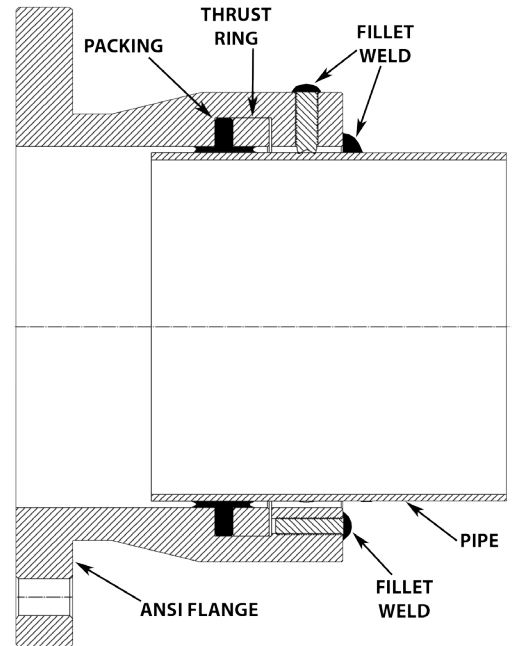
In addition to these, we are able to produce "Electronic Markers" with a quality above the standards for marking the critical points or standard locations of telecommunication, fiber optic and power transmission lines passing underground. As Notronpipeline, we always continue to produce better and higher quality products in line with the demands of the energy sector, telecommunication infrastructure sector and maintenance services.



BEFORE WELDING



AFTER WELDING



The NOTRON Flange is a mechanical fitting which does not require welding unless specified by the customer. They are particularly useful for making tie-in connections for prefabricated expansion and re-work projects in weld hazardous areas. NOTRON Flanges are easy and safe to install for many applications including hard to reach places such as overhead piping, conduits, tunnels, tight manifolds or hazardous locations. Special installation instructions are necessary for thin wall applications. Contact NOTRON for details. NOTRON Flanges are available in standard sizes 1.5" through 48"; ASME class 150 through ASME class 600. Special sizes and pressures are available upon request.

NOTRON MAXIMUM WORKING PRESSURE -20° F TO 100° F

API PIPE SIZE	PIPE ANCHORED				PIPE NOT ANCHORED			
	ANSI 150	ANSI 300	ANSI 400	ANSI 600	ANSI 150	ANSI 300	ANSI 400	ANSI 600
1.5"	285	740	990	1480	285	740	990	1480
2"	285	740	990	1480	285	740	990	1480
3"	285	740	990	1480	285	740	990	1247
4"	285	740	990	1480	285	740	990	1131
6"	285	740	990	1480	285	696	696	696
8"	285	740	990	1480	285	513	513	513
10"	285	740	990	1480	285	396	396	396
12"	285	740	990	1480	285	328	328	375
14"	285	740	990	1480	285	311	311	350
16"	285	740	990	1480	238	238	238	268
18"	285	740	990	1480	251	251	251	282
20"	285	740	990	1480	203	203	203	229
24"	285	740	990	1480	212	212	212	247

- Standard body materials:
 - ASTM A106 Gr. C
 - ASTM A105
 - ASTM A350 Gr. LF2
- Options:
 - Marine epoxy paint for corrosion protection
 - NACE MR0175 / ISO 15156 compliant materials

