

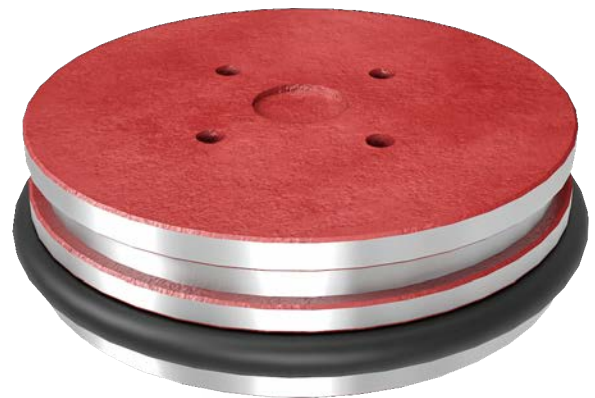


NOTRON PIPELINE

6"x6" Hot Tapping Saddle - Split Tee



- Standard body materials:
 - ASTM A216 Gr. WCC / A516 / P460
- Options:
 - Marine epoxy paint for corrosion protection
 - With Bolts (ASTM A193 Grade B7 with ASTM A194 Grade 2H Nuts)
 - With Double Oring
 - Approx. Body weight: 100 kg
 - Approx. Bolts Weight: 26kg
 - Approx. Total: 126 kg

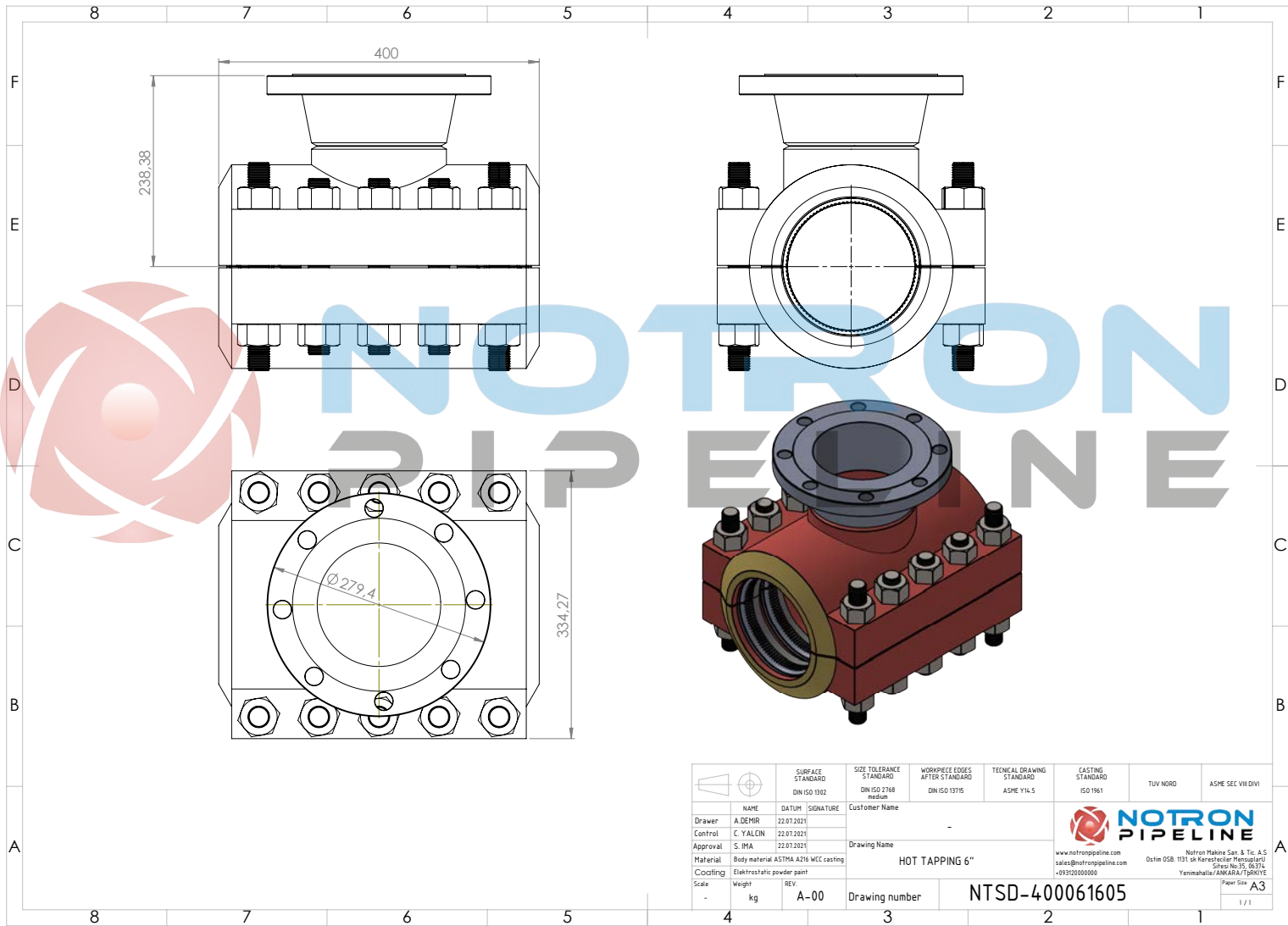


Established in 2008, our company started to design and produce equipment for oil and natural gas pipelines in the energy sector. It is the only company in Turkey that can respond to "PIG" production and design. With this capability, we compete with international companies in the Blue Stream and Baku-Ceyhan pipeline projects.

With our engineer staff, we are able to produce innovative solutions. Alternative to our PIG design and manufacturing for oil – gas pipelines, we also manufacture pipeline coupling elements connection equipment with high quality standards.

Additionally, we produce high quality Electronic Utility Markers, which are used globally for marking critical infrastructure locations such as telecommunication, fiber-optic, power transmission lines/cables, water or sanitary pipes, natural gas pipes underground. As Notron Pipeline, we continue to produce higher quality products in line with the demands of the energy sector, telecommunication infrastructure sector





The Notron In order to create branch connections on existing pipelines or to perform plugging operations without the need for welding, Hot Tapping-Saddles are made in accordance with ASME code section VIII and API 6H/6X. All you have to do is tighten the side bolts to install them. Seals are held in place during installation by steel girder rings, which guard against displacement and damage. Hot Tapping-Saddles can be permanently welded to the pipeline under the right circumstances.

When utilized for plugging operations, hot tapping saddles are made with clamping regions to limit fitting movement while the plug is being placed. It is easy to install; just bolt it on, put the tapping apparatus together, do a hydrotest, and then plug it in. If this product hasn't been welded to the pipeline, it can be recovered, refurbished, and utilized once more. There are branches in every size and pressure range. There are outlets that are threaded, welded, or flanged.